

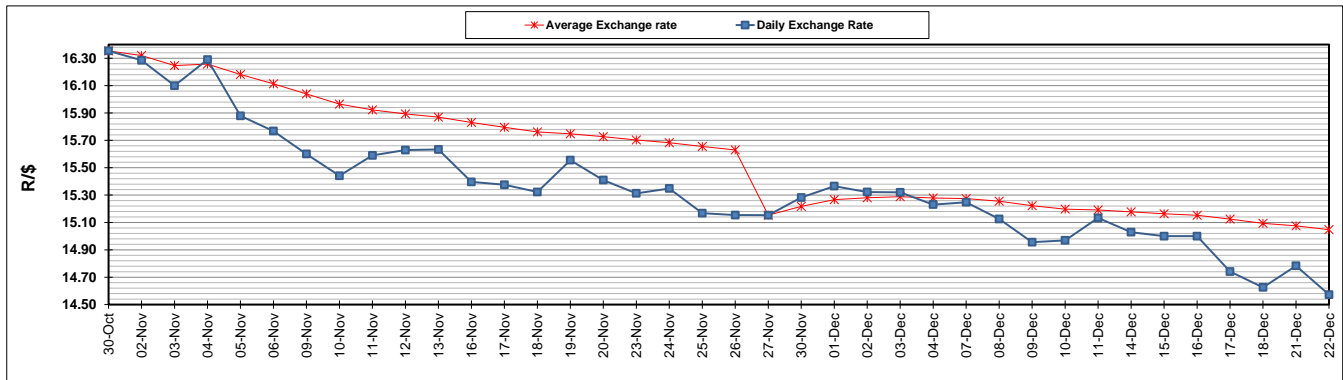
	PETROL 95 ULP	PETROL 93 ULP & LRP	DIESEL 0.05%	DIESEL 0.005%	ILL. PAR.
GAUTENG PUMP PRICE (SA c/l) AS FROM 02/12/2020	1,446.000	1,426.000	-	-	-
WHOLESALE PRICE (SA c/l) AS FROM 02/12/2020	-	-	1,245.420	1,247.820	684.688
SINGLE NATIONAL MAXIMUM RETAIL PRICE	-	-	-	-	856.000
BASIC FUEL PRICE - 22/12/2020 (SA c/l)	516.803	510.179	531.289	533.698	516.908
PRESS RELEASE CONTRIBUTION TO BFP 02/12/2020 - 22/12/2020 (SA c/l)	479.170	469.170	486.630	489.030	472.128
UNIT OVER/(UNDER) RECOVERY - 22/12/2020 (SA c/l)	(37.633)	(41.009)	(44.659)	(44.668)	(44.780)
AVERAGE BASIC FUEL PRICE 27/11/2020 - 22/12/2020	519.748	513.603	538.361	539.701	522.913
AVERAGE UNIT OVER/(UNDER) RECOVERY 27/11/2020 - 22/12/2020	(36.028)	(39.883)	(53.731)	(52.671)	(54.285)

ANALYSIS MOVEMENT OF AVERAGE OVER/(UNDER) RECOVERY

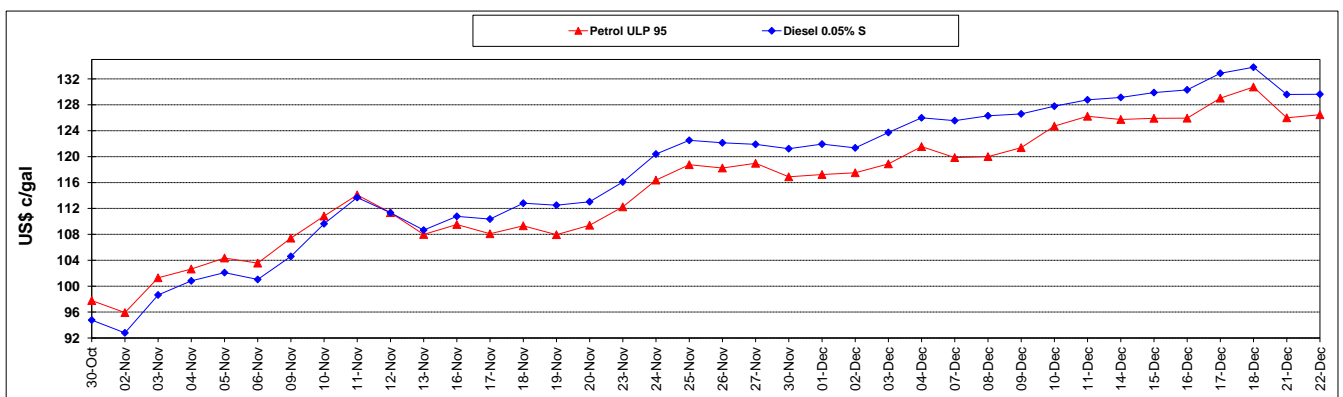
	PETROL 95	PETROL 93	DIESEL 0.05%	DIESEL 0.005%	ILL. PAR.
- MOVEMENT IN INTERNATIONAL PRODUCT PRICES	(56.165)	(59.782)	(74.589)	(73.581)	(74.545)
- MOVEMENT IN EXCHANGE RATE	20.137	19.899	20.858	20.910	20.260
AVERAGE UNIT OVER/(UNDER) RECOVERY 27/11/2020 - 22/12/2020	(36.028)	(39.883)	(53.731)	(52.671)	(54.285)

R/\$ EXCHANGE RATE - (R/\$14.5725 - 22/12/2020)

EXCHANGE RATE USED IN BASIC FUEL PRICE



INTERNATIONAL PRODUCT PRICES OF BASKET USED IN BASIC FUEL PRICE



BASIC FUEL PRICE IN SA CENTS PER LITRE

